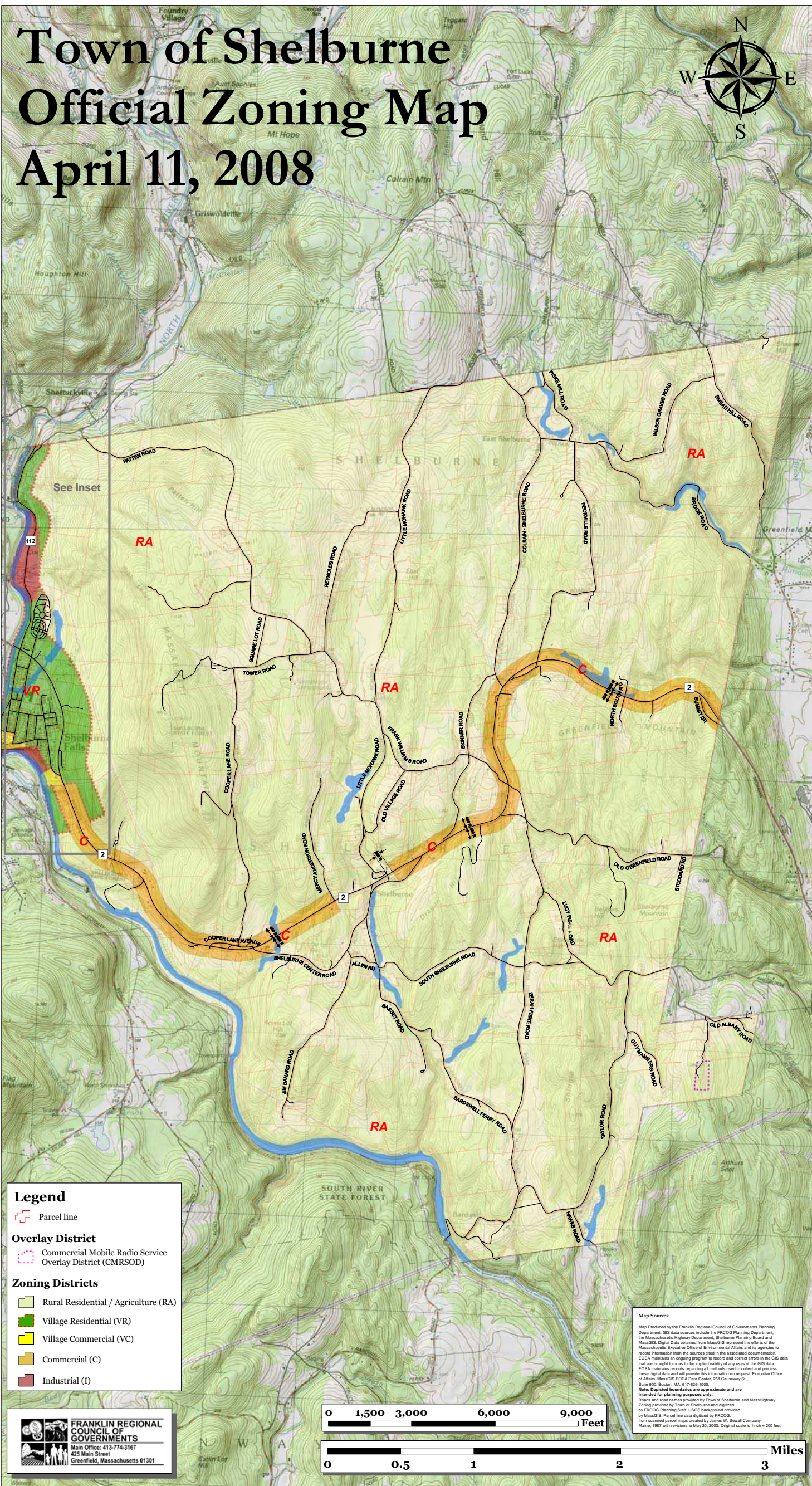


Town of Shelburne Official Zoning Map April 11, 2008



- Legend**
- Parcel line
 - Overlay District**
 - Commercial Mobile Radio Service Overlay District (CMRSOD)
 - Zoning Districts**
 - Rural Residential / Agriculture (RA)
 - Village Residential (VR)
 - Village Commercial (VC)
 - Commercial (C)
 - Industrial (I)

FRANKLIN REGIONAL COUNCIL OF GOVERNMENTS
Main Office: 413-774-3167
425 Main Street
Greenfield, Massachusetts 01301



Map Sources:
Map Produced by the Franklin Regional Council of Governments Planning Department. GIS data sources include the FRCOG Planning Department, the Massachusetts Highway Department, Shelburne Planning Board and MassGIS. Digital Data obtained from MassGIS represent the efforts of the Massachusetts Executive Office of Environmental Affairs and its agencies to record information from the sources cited in the associated documentation. EGISA maintains an ongoing program to record and correct errors in the GIS data that are brought to or as to the implied validity of any uses of the GIS data. EGISA maintains records regarding all methods used to collect and process these digital data and will provide this information on request. Executive Office of Affairs, MassGIS EOC EA Data Center, 251 Causeway St., Suite 100, Boston, MA, 017-609-1000.
Note: Depicted boundaries are approximate and are intended for planning purposes only.
Roads and road names provided by Town of Shelburne and Massachusetts. Zoning provided by Town of Shelburne and MassGIS.
Zoning provided by FRCOG Planning Staff. USGS background provided by MassGIS. Parcel line data digitized by FRCOG.
from scanned parcel maps created by James V. Sewall Company Maine, 1987 with revisions to May 30, 2003. Original scale is 1 inch = 200 feet.

Village of Shelburne Falls

